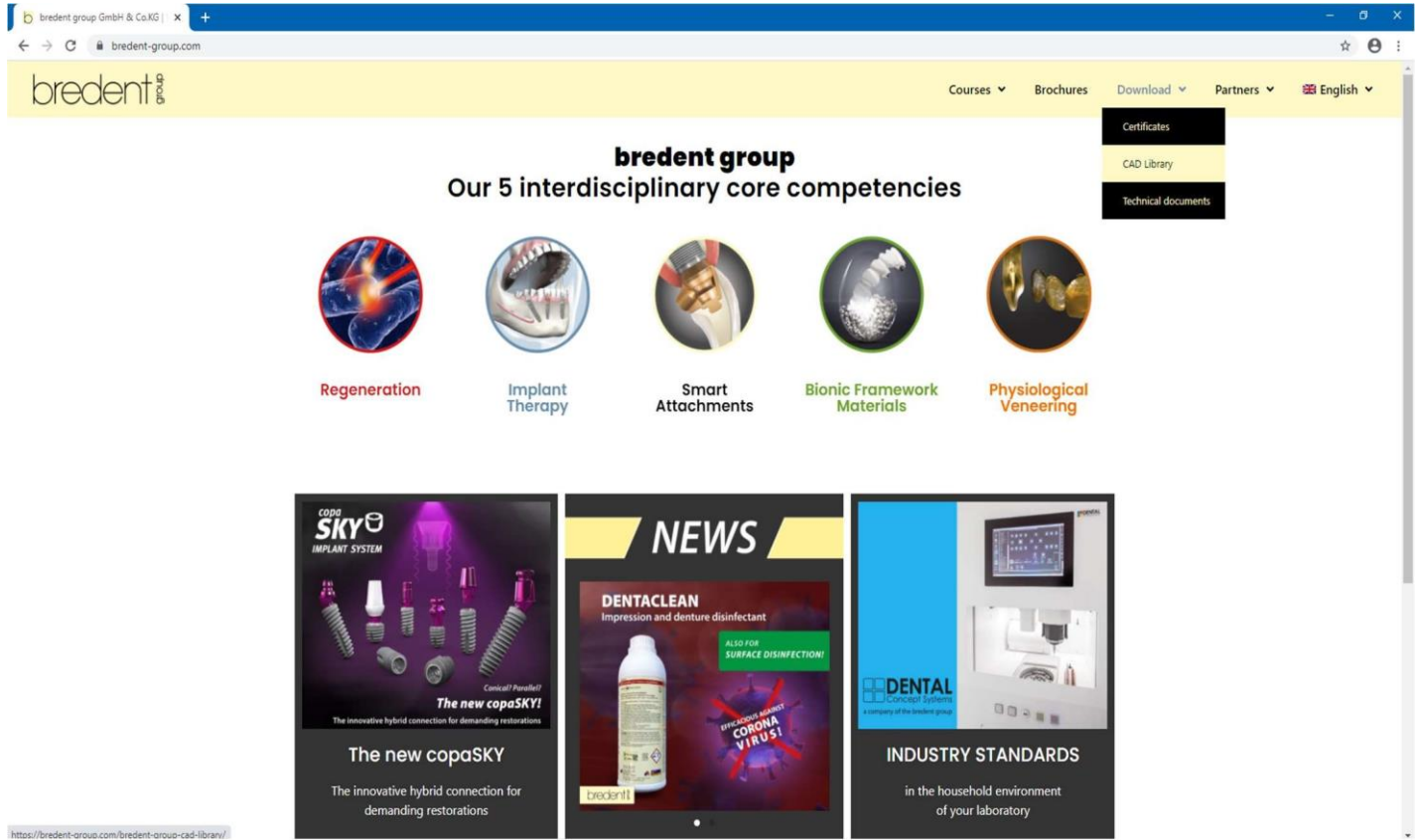
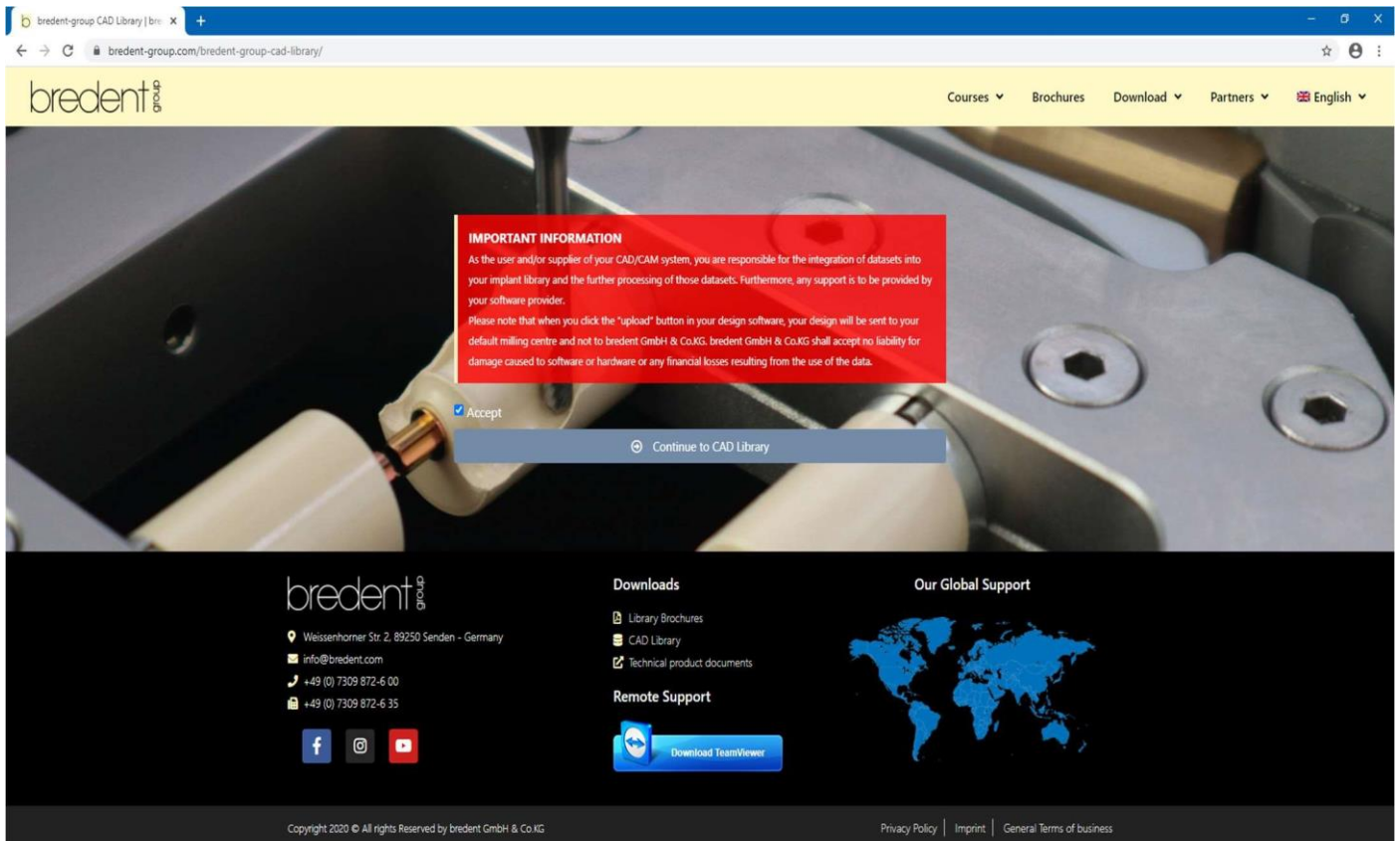


3Shape libraries installation procedure

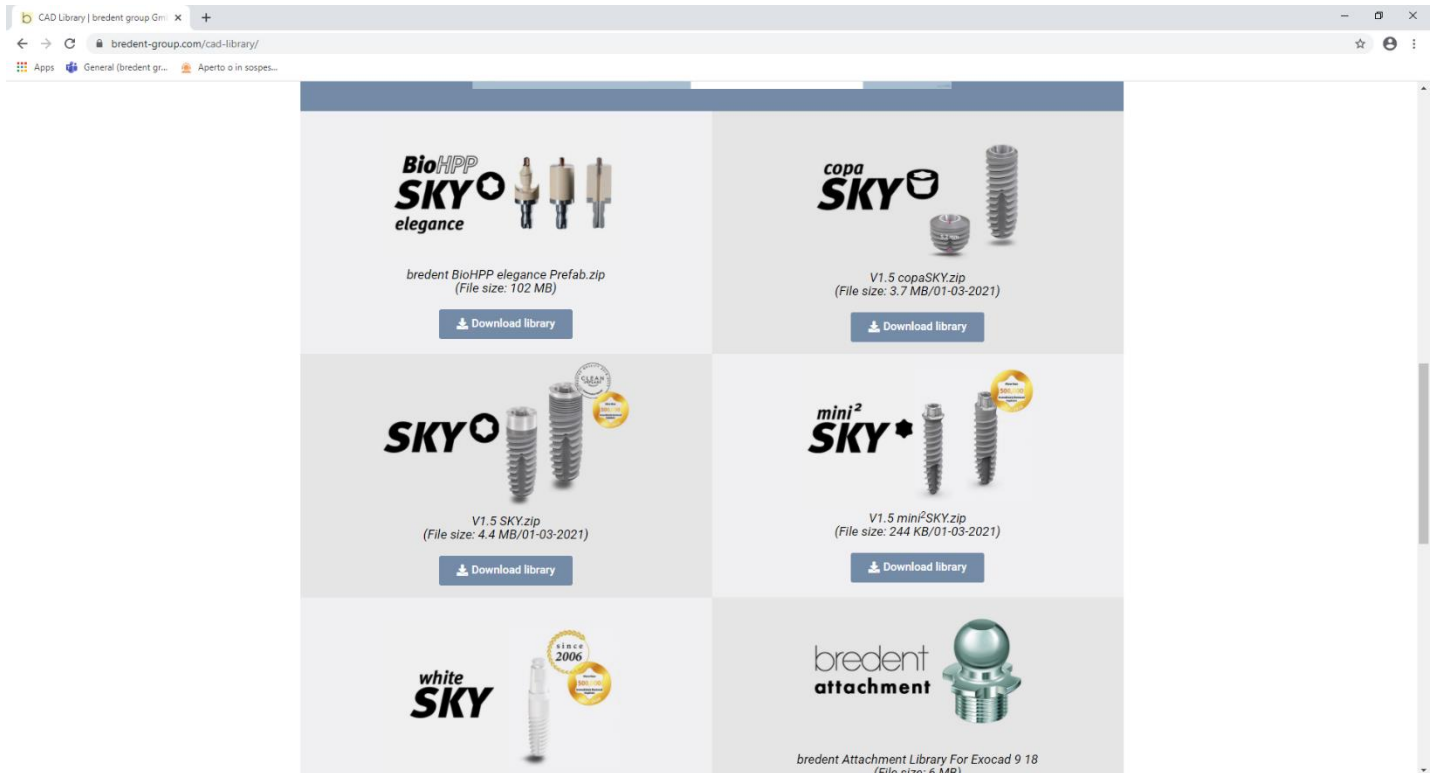
1: Visit our website and click on: downloads and after on CAD library.



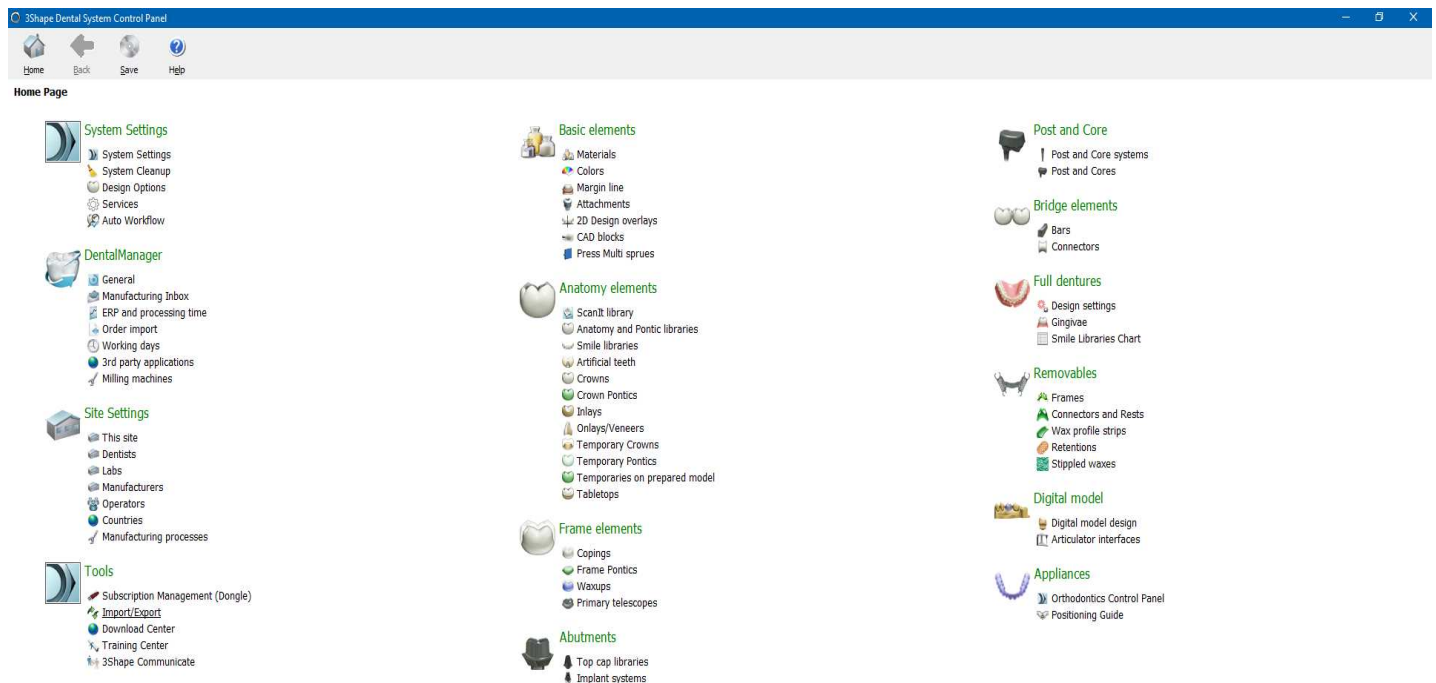
2: Accept our terms to continue.



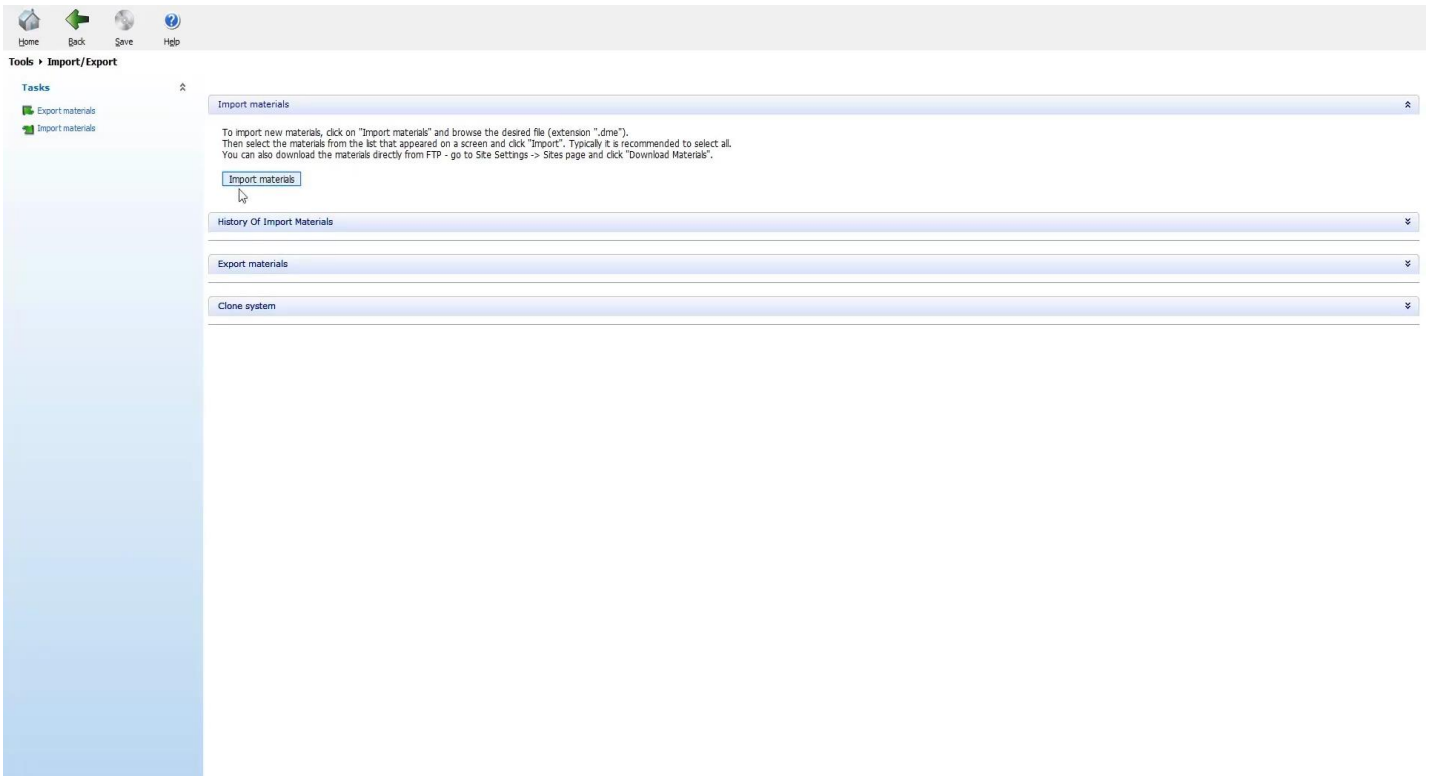
3: Choose 3Shape software and the files to download. The download will start immediately.



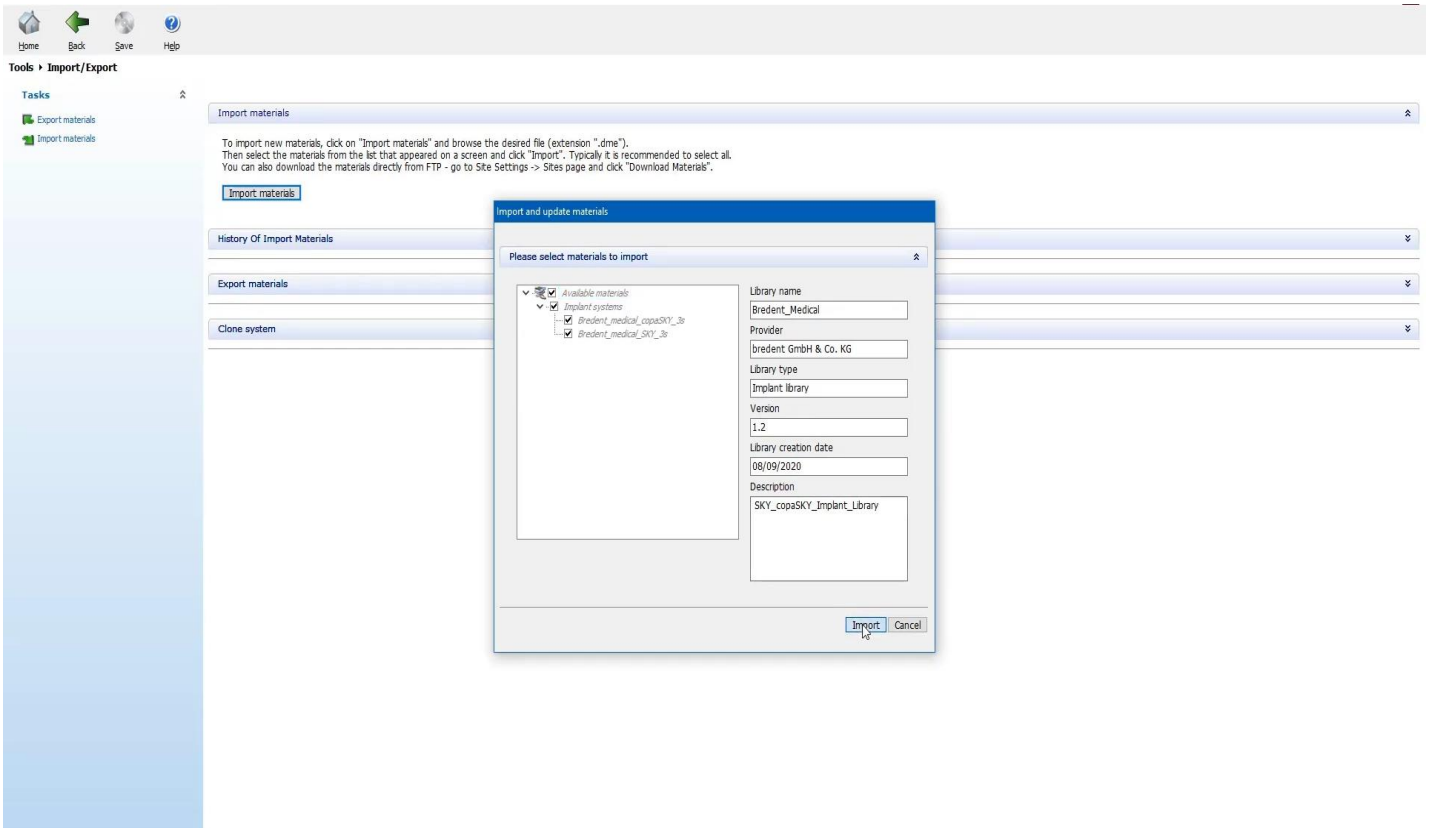
4: Open 3Shape Dental System Control Panel and click "Implant system".



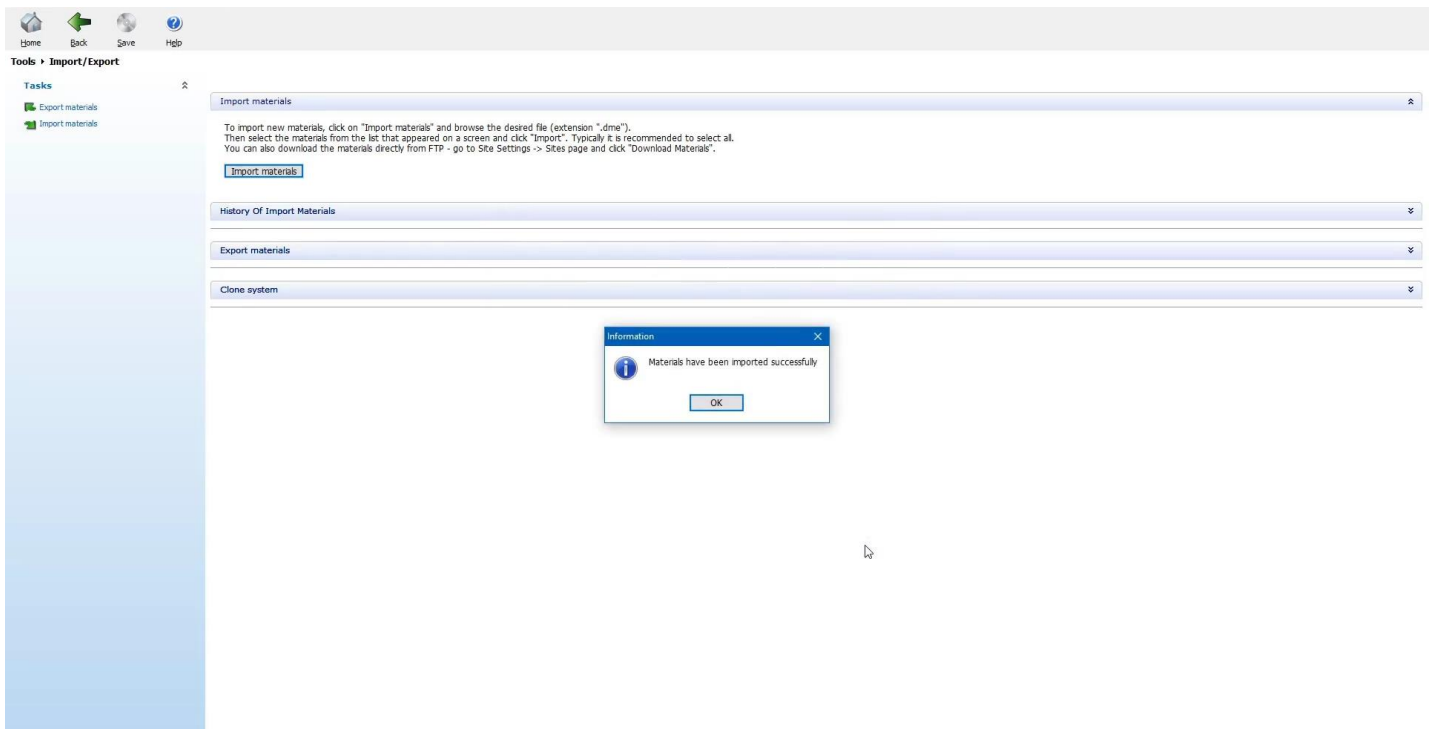
5: Click "Import materials".



6: Here you can read information about the library you are importing. Please click "import".



7: The library is installed. Don't forget to save.



8: If you have older versions of our library, please don't forget to delete them before installing the new one.