

SKY fast & fixed temporary

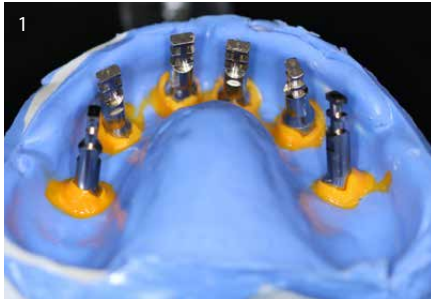


Temporary fixed restoration with
novo.lign veneers & top.lign professional

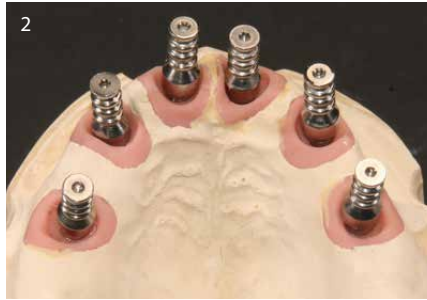
Quick Guide

bredent

Temporary fixed restoration with novo.lign veneers & top.lign professional



1
Repositioning the impression caps incl. the laboratory analogs.



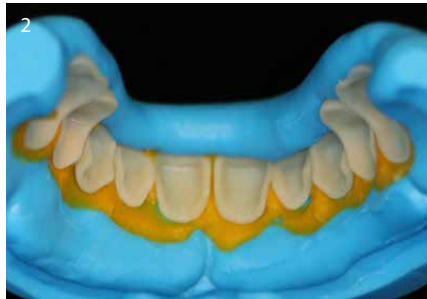
2
Fabrication of the model with gingival mask (Multisil-Mask soft) and superhard-stone, class 4 (Exakto-Rock S).



3
Mounting in the articulator (mushbite).



4
The prosthetic caps are screwed on; it may be necessary to shorten the prosthetic caps; Wax set-up with novo.lign veneers and set-up wax; then the matrix is prepared using Haptosil D & visio.sil fix.



5
Preparation of novo.lign veneers:
- Sandblast with aluminium oxide (110µm, 2-3 bar)
- Remove abrasive dust with oil-free compressed air - do not clean with steam! If required, apply top.lign professional to areas difficult to access. Chemical bonding not required!



6
Place silicone tubes on the prosthetic caps which serve as spacers for the adhesive gap later on.



7
Integrate one prosthetic cap into the denture. Seal the screw canal with the SKY locking pin.



8
Apply a thin coat of Isoplast to the plaster model -> avoid formation of puddles. Place the matrix with the veneers onto the model.



9
Block out the lingual area with wax stripes to prevent the resin from flowing off.



10 Mix top.lign professional evenly in a ratio of 10 g : 7 ml and allow to swell for 30 sec.



11 Pour top.lign professional into the matrix. The processing time span is 3-5 minutes.



12 Posi-boy is used for accurate positioning.



13 Pressure pot, 3-4 bar, approx. 50°C, 10 minutes.



14 Use burs for processing and prepolish. The base is designed in a way to avoid adhesion of food residues.



15 Create space for the prosthetic caps and prepare small notches for simple application of Qu-resin in the oral cavity.



16 Preparing with Qu-Connector.



17 Stress-free bonding in situ with Qu-resin dentin, bite check after bonding (to avoid the risk of fracture).



18 Remove excess Qu-resin dentin and finish. Polish with goat-hair brush and cotton buff. If required, repolish with handpiece and Acrypol. Above all, basal areas need to be polished thoroughly.



Completed temporary; final insertion in the patient's mouth is carried out subsequently.



Products used

Product	REF	Content of package
top.lign professional polymer	Depending on the shade and the package size	22 shades 40 g, 80 g, 200 g
top.lign professional liquid	Proliq01 Proliq05	100 ml 500 ml
novo.lign veneers	Depending on shade and design	17 shades 15 anterior and 3 posterior designs
haptosil D	54001180 54001190	2x 1300 g 2x 7500 g
visio.sil fix	54001300	50 ml double cartridge
Set-up wax 3, pink	43001510	220 g
Posi-boy	36001010	1 piece
Bur	See brochure 000753GB	1 piece
Acrypol polishing paste	52000170	170 g
Goat-hair brush	35000550 35000540	15 pieces each
Cotton buff	35000650	15 pieces
Multisil-Mask gingival mask, soft	54001047	50 ml double cartridge
Exakto-Rock Scan super-hard stone, class IV, for scan models	5700SE52 5700SE51 5700SE50	2 kg 5 x 2 kg 10 x 2 kg
Assortment - Qu-Connector and Qu-resin dentin	54001162	1 piece



novo.lign veneers



Qu-resin dentin



top.lign professional

