

BioniCut Snap



Milled aesthetic functional rails in snap-on technology

BioniCut Snap



.....

Dentists and patients
are delighted: **A secure fit**
tooth-friendly, unobtrusive
and **beautiful.**



Designed for aesthetic and physiological:

- ▶ Healing rails with functional therapy.
- ▶ Opposite-jaw splints for immediate restorations.
- ▶ Removable definitive prostheses.

The best „snap“ properties

BioniCut Snap's excellent resilience completely outshines other materials.

Even PEEK or PAEK cannot match these values and comfort, as these materials are less elastic.



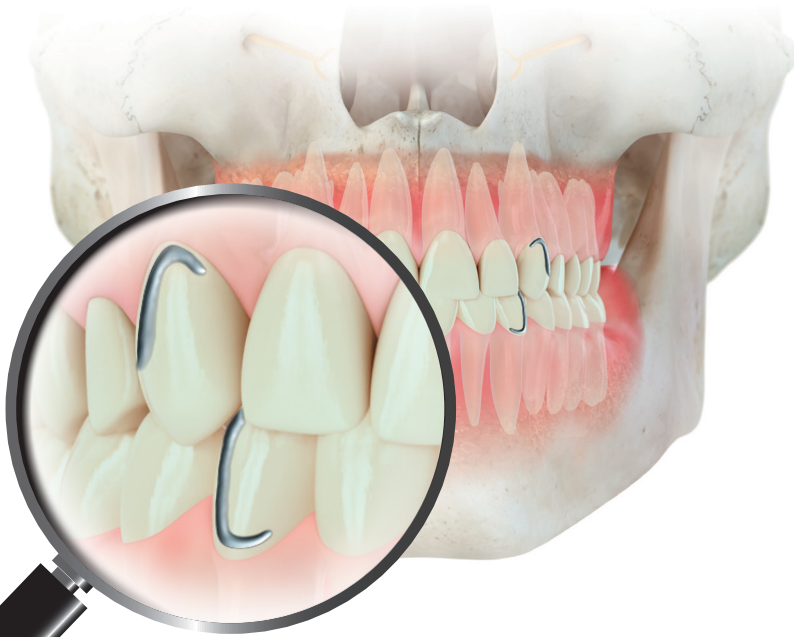
The perfect test drive for the patient!

With our 24-hour functional therapeutic stent
, the patient can eat and enjoy their
new everyday life without any problems.

BioniCut Snap

Clasp dentures

Metal



Interfering optics & abrasive,
stresses the hard tooth substance

Bionic material



Unobtrusive appearance &
gentle on the teeth

Snap-on rail

BioniCut Snap provides a **permanent firm hold**, even when chewing there is **no risk of breakage**.

No preparation or **removal** of **hard tooth tissue** is necessary.

BEFORE



AFTER



BioniCut Snap

Perfectly **wet** and **dry machinable**,
hardly any reworking with
the **breCAM.cutter TP Orange Line***.

*We recommend wet processing to prevent the material from overheating.

Our **material** is so **stable**, that you can cut out a **better occlusion recess** can be cut.



© Images: Maxi Grüttner

The CAD CAM solution for:

- ▶ Tooth-coloured, extremely thin and practically invisible splints (Snap-On technology/Beauty & Bite splint).
- ▶ 24 h functional therapeutic splints with which the patient can eat (!).
- ▶ Tooth-preserving, visually inconspicuous staple prostheses.
- ▶ Attachment and telescopic model casting bases.
- ▶ Removable, provisional staple prostheses for the healing phase of implant restorations.
- ▶ No restrictions on wear time.

BioniCut Snap



Bio Dentaplast

Benefit from
20 years
of experience
in analogue press
technology of
polymers ...

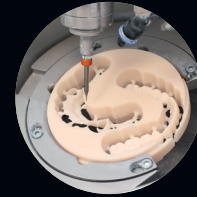


The „**Bio Dentaplast**“ material from the Thermopress system, which has been tried and tested over decades, is now not only available as a milled blank, but also has **improved properties**.

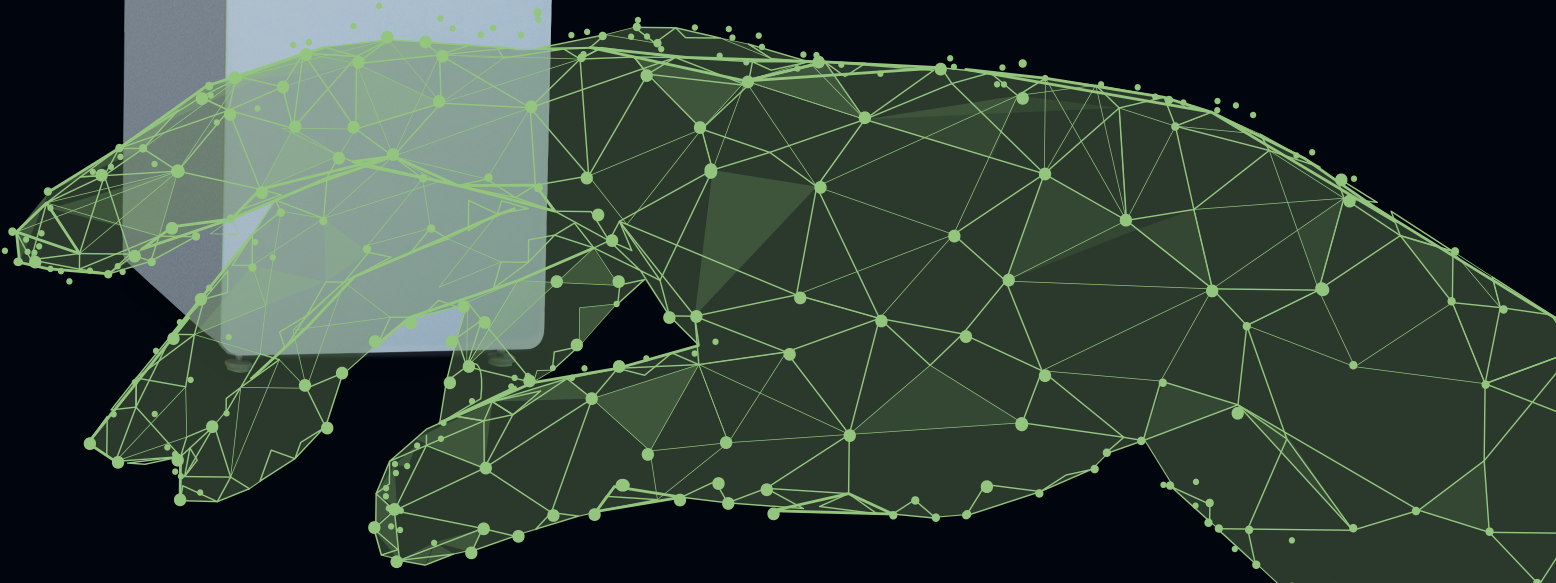


...▶ BioniCut Snap

... with the
advantages
of modern CAD/CAM
technology.



breident was able to bring the mechanical properties of the CAD/CAM results absolutely above the level of the usual advantageous analogue pressing processes with a specially developed production process of BioniCut Snap Blanks.



BioniCut Snap

The chameleon effect

Fascinating aesthetics



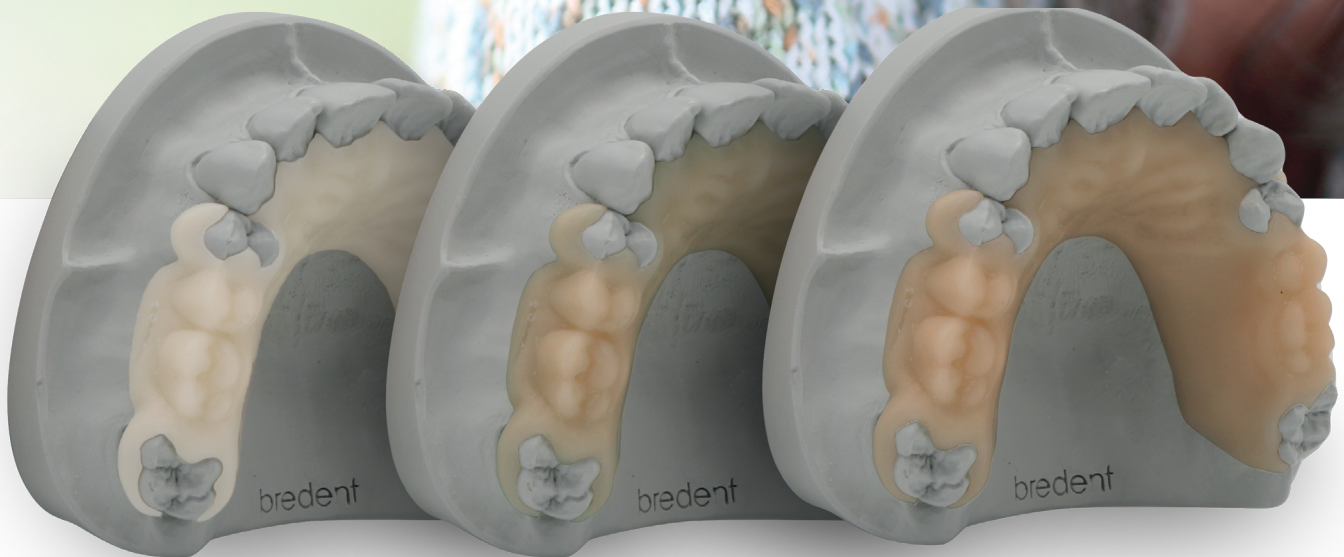
- ▶ Surprising chameleon effect for excellent visual adjustment.
- ▶ Perfect balance of translucency and colour coverage of natural teeth.
- ▶ Natural vitality and no greying in the mouth.
- ▶ Excellent colour matching in the classic A-D colour system.

Aesthetics and function - convenient snap technology

Due to the material uniformity, the characteristics of Bio Dentaplast, which was developed for the Thermopress system, are entirely comparable:

Properties based on DIN EN ISO 20795-1	
Flexural strength	80 MPa
Elasticity modulus	2200 MPa
Elongation [%]	> 10%

100% resilience (memory effect) in contrast to PEEK/PEAK materials.



A1

A2

A3



and lighter colours



and more intense colours

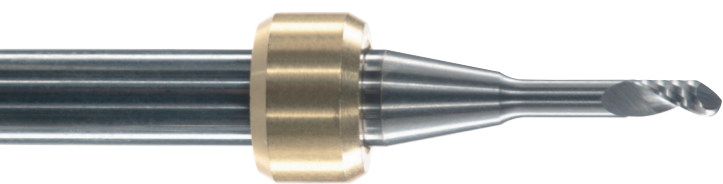
We recommend **visio.lign color** for further colour adjustments and customisation.

SINIAAD Bionicut



Bionicut ^{ACE} Snap in 98,4		
Colour	Height	REF
A1	20 mm (with step)	54003680
A1	25 mm (with step)	54003685
A2	20 mm (with step)	54003700
A2	25 mm (with step)	54003705
A3	20 mm (with step)	54003690
A3	25 mm (with step)	54003695

Bionicut ^{ACE} Snap zirconium tooth		
Colour	Height	REF
A1	20 mm	54003710
A1	25 mm	54003715
A2	20 mm	54003720
A2	25 mm	54003725
A3	20 mm	54003730
A3	25 mm	54003735



The right cutter for quick and precise results: The brecent breCAM Cutter TP or the Orange Line from Dental Concept Systems. Excellent results in dry or wet cutting.

Mistake and subject to change reserved

0091089GB-20230202



DENTAL INNOVATIONS
SINCE 1974

brecent
group