

IDS
2025

FIND US AT
Hall 4.2
Booth H068 - J069

EXHIBITION HIGHLIGHTS

IDS 2025

bredent |  **DENTAL**
Concept Systems | bredent
medical

bredent
group



FIND US AT
Hall 4.2
Booth H068 - J069

bredent
group

EXHIBITION HIGHLIGHTS

IDS 2025

Table of contents

bredent

breCAM consumables

breCAM.base, breCAM.HIPC True Nature &
breCAM.multiCOM+

6/7

brePRINT 3D print materials

8/9

visio.lign Digital Denture System

digital connect & digital bond

10/11

visio.lign | crea.lign

modern art by Andrea Foschi:

crea.lign OD & crea.lign HT,

visio.lign color & visio.lign shield

12/13

RevoCone® & BlueLine

14/15

Zirconium Finishing Kit, MKZ-Primer,

Fibro+ & DTK adhesive

16/17



DCQ™ & mini eagle®

18/19

DC1™ PRO & DC7™ PRO

20/21

Luxor Z Multishade

22/23

bredent medical

copaSKY 3.0

for narrow gaps

24/25

whiteSKY

Alveo Line & Tissue Line

26/27

SKY fast & fixed

Immediate restoration

28/29

CONFIDENTE – navigated implantology &

Ready for Use – Supporting Digital Dentistry

30/31

SKY pro guide plan &

3DIEMME – bioimaging technologies

32/33

HELBO®

Essential bacteria & biofilm management

34/35



Training facilities

Training lab in Senden, Germany,

Eisenhammer training center in Wesertal, Germany

& IFZI GmbH „International training center for Den-

tal Implantology in " in Nuremberg, Germany

36/37

bredent^{group}

bredent at IDS 2025

Online news & updates

39

Visit us and be inspired

– Welcome to our exhibition stand!



- | | | | |
|-----------|--|-----------|---|
| 01 | <i>Information bredent Academy, IFZI</i> | 13 | <i>breCAM multi.COM+/base & Luxor Z, cutter, rotating instruments & polishing, teeth, brushes, colour</i> |
| 02 | <i>DC1 milling machine</i> | 14 | <i>Luxor, visio.lign digital denture</i> |
| 03 | <i>DCQ milling machine</i> | 15 | <i>Selfiewall</i> |
| 04 | <i>DCS oven & scanner</i> | 16 | <i>Removable restorations – RevoCone – Dockloc</i> |
| 05 | <i>DC3 milling machine</i> | 17 | <i>Photodynamic therapy – HELBO</i> |
| 06 | <i>brePRINT 3D printer</i> | 18 | <i>bredent group lounge</i> |
| 07 | <i>brePRINT 3D print material</i> | 19 | <i>SKY fast & fixed, navigated implantology – SKY pro guide, ConfiDente</i> |
| 08 | <i>breCAM (BioHPP/HIPC/monoCOM/multiCOM/ BioniCut, cutter, rotating instruments & polishing, brushes & visio.lign parts)</i> | 20 | <i>Bone Growth Concept</i> |
| 09 | <i>DC7 milling machine</i> | 21 | <i>Implant prosthetics – interactive demo models</i> |
| 10 | <i>Eisenhammer blanks</i> | | |
| 11 | <i>visio.lign hands-on</i> | | |
| 12 | <i>visio.lign</i> | | |



Hartmut
Reins



Olaf
Glück

Since **1974**

the bredent group has stood for pioneering solutions in dental technology and prosthetics. With a clear goal in mind - to sustainably improve people's dental care - the company develops, produces and sells holistic and innovative complete solutions. In doing so, bredent attaches great importance to providing its customers with expert advice to ensure the safe and successful use of its treatment solutions. bredent has always focused on the well-being of patients and is committed to continuously

optimising products and work processes. Today, 50 years later, the bredent group comprises three strong companies:

bredent

*Specialist for
dental technology*

 **DENTAL**
Concept Systems

*Experts in CAD/CAM
mechanical engineering*

**bredent
medical**

*Pioneer in innovating
& safety-driven implant
solutions*

Cheers to 50 years



Prof. Peter
Brehm

Brigitte
Brehm

Nils
Brehm

Gerald
Micko

We live our corporate values – partner-oriented, trend-setting and efficient - every day under the slogan:
WE ARE ONE.

Together, we offer our customers perfectly harmonised, synergetic solutions - from first-class dental technology products and state-of-the-art machines to innovative solutions in the implant and prosthetics sector as well as modern prophylaxis. The bredent group has a global presence and an export share of 65 %. Over 640 employees worldwide contribute to the company's success. Our products are manufactured in Germany, in a production area of 13,000 m².

Since 2024, these have been stored, organised and shipped internationally from a 900 m² automated warehouse. At IDS 2025, the bredent group will be presenting its combined expertise in the digital process, and celebrating its 50th anniversary with exciting new products. Join us and raise a glass to 50 years of innovation and success!

Yours sincerely

the bredent
management team

bredent group

breCAM materials

combine efficiency, precision and aesthetics for your digital workflow.

breCAM.base

The already established uni.lign denture resin is now also available as a blank for digital processing with the advantages that are well-known to all:

- Fully cross-linked PMMA for a seamless bond
- Plaque-resistant & colour-stable
- Break-proof & physiological
- Durable & long-lasting stability
- Biocompatible low residual monomer
- Natural colour effect with and without veins



breCAM.HIPC True Nature

Available soon with colour gradient!

Aesthetic, physiological, for durable dental prosthesis such as veneers or monolithic structures.

- Proven in vivo for 12 years
- Technically compatible with neo.lign teeth and novo.lign veneers
- Can be extended with crea.lign and crea.lign GUM from the visio.lign system
- Ideal supplement to BioHPP, PEEK bridges or for gnathological therapies
- Long-term stability
- Plaque resistance
- Colour stability
- Bridges with up to two pontics

COMING SOON!



©Image: MDT Tim Wittig, Waiblinger Dental-Labor GmbH, Germany



STEP INTO A NEW WORLD

breCAM.multiCOM⁺

Aesthetics & flexibility - Stepless beauty & wide range of indications!

The second generation of polychromatic PMMA with cross-linker offers outstanding properties:

- *breCAM.multiCOM⁺ has high fracture and bending strength thanks to cross-linked technology and a very low rate of water absorption*
- *Ideal for the production of dentures (permanent wearing time) and ideal for crowns and bridges with up to three years wear time*
- *Also available in 25 mm height, especially for SKY fast & fixed immediate restorations*



3D printing materials – next generation

Precise, individually customised and sustainable

brePRINT custom tray blue

*The sustainable solution
for modern impression trays*



- **Customised fit:** Each impression tray can be individually adapted to meet the patient's specific needs, leading to improved results and higher patient satisfaction.
- **Sustainability:** To minimize harmful substances in the dental workspace, the TPO-free brePRINT custom tray 3D printing material uses an alternative polymeric photoinitiator.
- **Cost efficiency:** 3D printing eliminates the need for expensive tools and molds, significantly reducing production costs. Ideal for small series and customized fabrications.

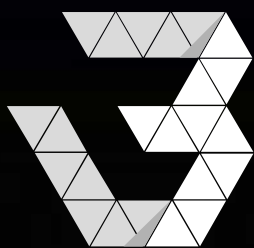


brePRINT surgical guide

Discover the future of dental surgery!



- **Highest precision:** The brePRINT surgical guide enables the production of surgical templates with maximum accuracy. This ensures precise implant placement and minimizes the risk of errors during the procedure.
- **Sustainability:** To reduce exposure to harmful substances in the dental workspace, the TPO-free brePRINT surgical guide 3D printing material uses an alternative polymeric photoinitiator.
- **Time and cost efficiency:** Thanks to high printing speeds and minimal post-processing, you can optimize workflows and reduce costs.



brePRINT

bredent



brePRINT splint hard

Precision and Reliability for your Dental Applications

For brePRINT splint hard, the bredent group uses high-quality resins known for their high fracture resistance and low shrinkage. This ensures maximum reliability and long-lasting restorations.

Choose brePRINT splint hard and experience the future of dental 3D printing technology. Rely on the quality and innovation of the bredent group and take your work to the next level.

visio.lign

Digital Denture System

**DISCOVER
NEW POSSIBILITIES!**

digital.connect

Light-curing primer



digital.bond

Dual-curing luting composite

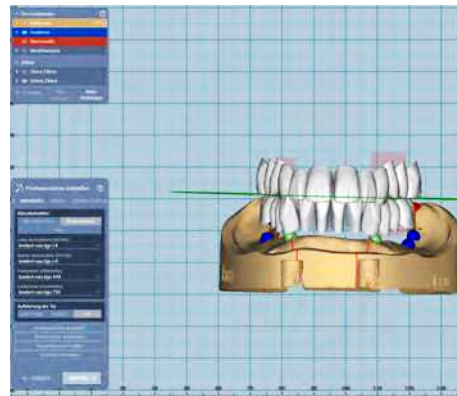


With digital.connect and digital.bond, prefabricated teeth (e.g., neo.lign), milled teeth, or tooth segments (made from breCAM.multiCOM+ or breCAM.HIPC) can be perfectly bonded to milled or printed PMMA denture bases with exceptionally high bond strength.

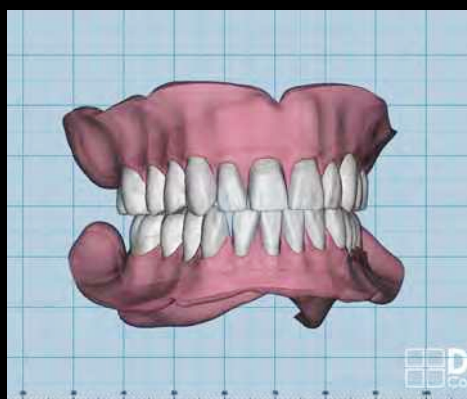
digital.connect is a light-curing primer, while digital.bond is a dual-curing luting composite.



In Exocad software the teeth are set up with the denture tooth library



The teeth are virtually set up based on the model analysis.



*Set-up complete denture base
with designed (modelled) gingiva*

3

With the innovative **visio.lign Digital Denture System**, you have access to a cutting-edge solution for digital dentures, allowing seamless integration of various materials. Thanks to our advanced products, **digital.connect** and **digital.bond**, you have the flexibility to choose.

Use high-quality **neo.lign prefabricated teeth**, or mill a tooth segment from a **breCAM.multiCOM+** blank.

Both options can be effortlessly bonded to a milled **breCAM.base** denture base or a printed denture base. To explore the neo.lign tooth library, visit our website at www.bredent.com and click the „**Downloads – CAD Library**“ button.

modern art

Andrea Foschi

crea.lign OD

Opaque Dentin

crea.lign HT

High Translucent



The crea.lign Opaque Dentin compounds bring chroma and depth effects to composite veneers with reduced wall thicknesses.

The chromacity can be easily adjusted in the case of colour variations. Thanks to the compounds' accurate chroma calibration, we have been able to reduce the number of opaque dentin compounds so that only one compound per colour group is required. The OD A to OD D and OD bleach compounds cover the most common colours in order to achieve brilliance and colour fidelity in very small spaces.

The crea.lign HT compounds are chromatically attenuated dentin compounds with very high translucency. Thanks to the interplay of this chromatic effect and the high translucency of the compounds, they give the tooth body depth and enable a natural transition from dentin to enamel. Hard transitions can be smoothed out perfectly. crea.lign HT is available in the three variants HT1, HT2 and HT3.

visio.lign color

Colour & protection



visio.lign shield

Gloss & protection



visio.lign color are light-curing composite paints that can be used to effortlessly achieve colour effects on the surface of a veneer. The visio.lign color colours Body A-D can be used to optimally adjust a veneer's chroma. Furthermore, there is a wide range of visio.lign color paints available for efficient surface characterisation. The visio.lign color paints impress with their colour stability as well as their resistance to discolouration and abrasion. The optimal solution for definitive restorations.

The new visio.lign shield gloss varnish for composite, PMMA and BioHPP allows you to create optimal surface gloss and protection. A surface finished with visio.lign shield gloss varnish acts as an abrasion-resistant protective shield that won't discolour. An optimal result is achieved, especially on hard-to-reach surfaces such as the interdental area, because visio.lign shield is available in two viscosity variants – fluid "LV" and viscous "HV" – to give every user as much flexibility as possible. It takes just a few work steps to achieve a top-class surface gloss. This saves users valuable time compared to the conventional polishing process.

RevoCone®

The removable bridge

for all life circumstances



The RevoCone housing ensures a secure hold for the matrices.



The RevoCone caps are available in different retention levels.



0 N 4 N 8 N 12 N 16 N



The RevoCone cone features a circular retention for optimal stability.



With $\leq 25^\circ$ angulation, implants can be optimally aligned, ensuring precise fit and maximum functionality.

The RevoCone Base is manufactured digitally for superior accuracy.

The novel and revolutionary double crown system for all implant systems guarantees a high level of comfort, even when a patient's health and living circumstances are changing.

Indications:

Total prosthesis, column propagation and immediate restoration

- Production via prefab is possible for all implant systems
- Easy friction recovery thanks to different inserts
- Time-saving production thanks to CAD/CAM
- No cone friction effect makes it easier to remove the bridge
- High static value with vertical and horizontal force application

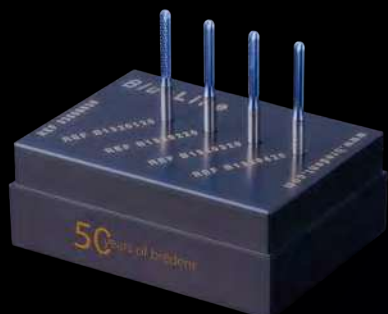
The future-oriented and secure system offers all the options to patients, dentists and laboratories



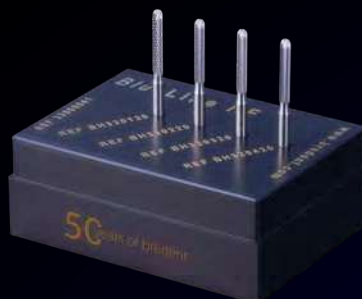
Pre-assembled and thus compact, precise, fast and affordable. Individually tailored to the patient and as a result, versatile and successful!

BlueLine

A must-have for professionals!



BlueLine Milling Set (4-piece)



BlueLine HF Milling Set (4-piece)

Parallel milling cutters

designed for perfect surface finishing

of CoCr alloys and titanium – available in two versions.
BlueLine – Featuring the proven Diatit surface coating for extra hardness and long service life, ideal for use in milling devices up to 30,000 rpm. BlueLine HF – Designed for high-frequency milling devices with speeds of up to 60,000 rpm.

Both versions come in four different grit levels – from coarse to high-gloss – minimizing post-processing time when working on milled telescopic crowns or bars. Now also available with 2.35 mm and 3 mm shank.

Additional milling sets for pre- and post-processing of various materials are also available!



Top Solutions **for Dental Technicians**

Perfect surfaces, precise tools, strong adhesion.

Zirconium Finishing Kit

High-Quality Diamond Tools

The new Zirconium Finishing Kit for sintered zirconium includes nine specialised tools and the Zi-polish zirconium polishing paste, ensuring a flawless high-gloss finish.

High-quality diamond tools in various shapes and sizes, along with Diagen-Turbo-Grinders, make individual tooth contouring easier – as confirmed by experienced dental technicians.



MKZ-Primer

Composite-to-Metal Bonding

The MKZ-Primer conditions all metallic non-precious alloys (NPM), titanium, zirconium and oxide ceramics, creating a strong chemical bond to composites such as crea.lign and novo.lign, as well as other resins like top.lign and PMMA.

The MKZ-Primer is intraorally applicable and ideal for bonding custom abutments.



Fibro+

Surface optimization

Fibro+ tools create the ideal surface roughness (0.21 to 0.4 μm) for optimal fibroblast deposition. These surface tools are used for „fibrolizing“ metals, ceramics, and zirconium.

We recommend Fibro+ (grit: 0.35 μm) for removing adhesive residues.



DTK adhesive

Secure – Sterilisable – Strong



The dual-curing DTK adhesive enables a durable and secure adhesive bond between all prosthetic materials. It is ideal for bonded custom abutments.

Thanks to its sterilisability, contamination is avoided and maximum hygiene is possible. The DTK adhesive is suitable for both intraoral and extraoral applications.



NEW DCS GENERATION

Compact into the Future

– off to a new digital class!



*True Nature
aesthetics*



*Intelligent
control*



Wet & dry



*Tactile
measurement*



*Safe pick-up
Stations*



C-clamp



*Components
scan*



*Automation
for blanks und tools*



*Suction and Cooling
Milling Point*

With the DCQ™, Dental Concept Systems offers a modern milling system in the compact class, which opens up new possibilities for the user in terms of aesthetics and precision.

With an 8-fold change system for blanks, automated tool management and a tactile measuring system, the DCQ™ enables convenience in wet and dry machining.

In addition to the efficient entry into the dental CAD/CAM world, the compact system also offers features, which previously could only be implemented with industrial-level devices and is therefore also welcome in extensive dental production.



A user-friendly process guide, directs the operator through all work steps and ensures results of high quality and aesthetics. As with all DCS systems, a wide range of DCQ™ materials and systems ensures the user a clear competitive advantage.

mini eagle

Compact Design

– *small but powerful!*



With the **mini eagle®** we offer a high-quality expansion of our portfolio.

The new fully automatic 3D desktop scanner "Made in Germany" is one of the quietest 3D scanners on the market and can precisely carry out common dental indications. Ideal for all newcomers and professionals, who want to produce easily, quickly and accurately in-house. The included smart optics® Comfort Mode expands the range of functions of the mini eagle® enormously. It includes a speed update, which makes the scanner approximately 25% faster, as well as various features that significantly increase scanning comfort.

- Removable swivel unit
- 3D sensor unit (projector & camera)
- Housing made of high quality material
- Articulator scan
- Imprint scan
- secondDie
- multiDie/multiDie⁺
- multiCase-project
- KFO-project

Includes smart optics® Comfort Mode



**NEW
DCS GENERATION**

Technological lead *in the modern compact class!*



*5-axis
simultaneous machining*



*Modular construction
for individual use*



*Coolant circuit for
milling and grinding*



*18-tool magazine with
automatic carousel*



*Automatic machine
measuring system*



*Synergy in manufacturing
through CONTROL system integration*



*Secure abutment
manufacturing*



*Precise grinding
of ceramic materials*

The DC1™ PRO sets new standards in metal processing with a more powerful spindle and a forward-positioned collet, allowing deep cavity machining with exceptional precision.

Its air-cooled heat sink enables temperature-dependent processing, ensuring stable results for high-precision superstructures.

The DC1™ PRO is a versatile all-rounder, capable of handling all materials with efficiency and reliability.



DC7TM

— PRO —

Strong – Productive – Modern



*Motor spindle
4000*



*T5
ball screws*



*5-axis
simultaneous machining*



*20-position tool changer
with magazine system*



*Heavy duty industrial spindle
with high clamping force*



*Solid machine frame for
low-resonance continuous production*



*Automatic blank measurement
in the 7-disc changer*



*2 coolant ports for
milling and grinding*



*Spindle shape enables
large setting angle*



*Individual abutment manufacturing
in the 7-disc changer*



*Also available with
industrial CAM software*



*User-Friendly
DC-CONTROL system*



*Automatic
machine calibration system*

With a high-performance spindle delivering up to 4000 watts of power, equipped with an energy-efficient dry cooling system, the new DC7TM PRO System sets a new industrial standard for precision and boosts productivity for the user.

Featuring 3D measurement with 5-axis correction and high-precision T5-class ball screws, this system ensures unmatched accuracy. A proven technology has now evolved – offering even greater efficiency and reliability.

Luxor Z Multishade

Multiple Beauty – Inspired by Nature

Luxor Z Multishade is isostatically pressed, making it resistant to microfractures and burrs. This means that restorations retain their individual surface, shape and beauty even with high feed rates and high milling speeds.

Ensure high process reliability and a low material usage rate in production with Luxor Z Multishade.

≥ 700 MPa
49-52 % translucency



Enamel / incisal area

≥ 800 MPa

Dentin / body area

≥ 1,000 MPa
42-44 % translucency

Cervical / neck area

- High process reliability and a low material usage rate in production
- Higher translucency in the incisal area for natural light transmission
- Optimal opacity with the help of the natural powerchroma formula
- Naturally realistic colour gradients from the powerchroma dentine to the lighter incisal edge
- Increased strength in high-stress areas without compromising on aesthetics and design



LUXOR 2

Multishade

Create **highest aesthetics**
with convenience



One prosthetic connection geometry for all implant diameters

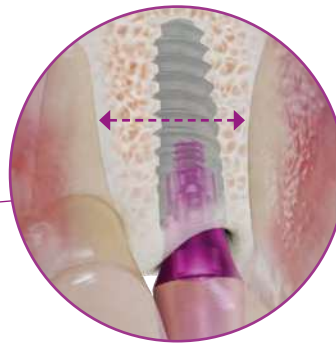
- High primary stability in all bone qualities for immediate loading
- Microstructured backtaper to support crestal bone growth
- Subcrestal implant positioning for optimal osseointegration
- Conical-parallel implant-abutment connection without wedging for a precise fit



WE WIDEN YOUR POSSIBILITIES! *Slim.*

Angled.

Ultra short.



- For narrow gaps ≤ 6 mm
- Tapered emergence profile
- More space for hard and soft tissue



360° IMPLANTOLOGY
—MORE THAN IMPLANTS—

copa
SKY 
IMPLANT SYSTEM

copaSKY 3.0

For narrow gaps

NEW!

*Slim.
Stable.
Immediately.*



whiteSKY Alveo Line & Tissue Line

Zirconia implants

One piece
Versatile
Reliable

Proven manufacturing process
and therapy

The legacy of the 20-year *whiteSKY success story.*

whiteSKY A.L. and T.L. retain the one-piece design and intricate fabrication from compressed zirconia. This ensures whiteSKY implants are extremely stable, a key factor for whiteSKY's long-term success.

The blasted surface combined with the bone quality-oriented surgical protocol produces high primary stability in all bone qualities. This high primary stability is the basic prerequisite for immediate restoration with whiteSKY zirconia implants.

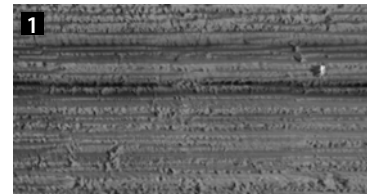
The benefits

The beneficial characteristics and multi-faceted nature of a whiteSKY zirconia implant.

The stable nature

- *Conical cylindrical implant shape*
- *Self-tapping double thread*
- *Compression thread*
(bone quality = primary stability)
- *Finely structured sandblasted surface*
→ optimal basis for the accumulation of bone cells
(see right, Figures 2 and 3)
- *Implant shoulder with horizontal microgrooves*
→ perfect gingiva positioning thanks to a microgroove structure similar to that of natural gingiva *(see right, Fig. 1)*

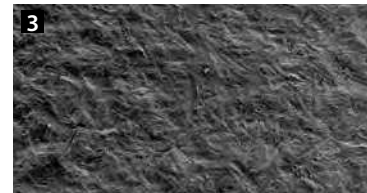
Macromounting | whiteSKY surface



Implant shoulder with
horizontal micro-grooves



Microstructure in the µm range
for rapid bone adaptation



R_a : 0.9 – 1.0 µm
 R_t : 7.0 – 7.2 µm
 R_z : 6.05 – 6.15 µm

white **SKY**

IMPLANT SYSTEM

Two angled surfaces, 15° each

→ less individualisation required
to restore angled implants

Groove

→ Fixation of prosthetics - "Cement lock"

Optimised self-tapping thread

→ Less force required to
screw the implant in

Rectangular attachment connection

→ Anti-rotation device

Optimised bonding surfaces

Optimised abutment height (4.5 mm)

→ Simplifies prosthetic restoration

Optimised surface structure

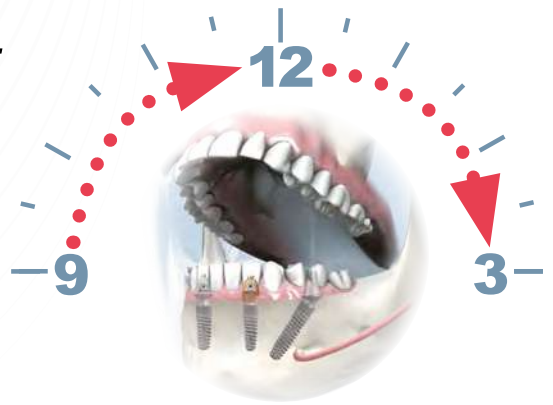
→ For soft tissue attachment
(see left, Fig. 1)

Rough surface

→ For reliable osseointegration
(see left, Fig. 3)



One implant abutment connection for all diameters



Development of new patient groups
Growth for the practice



Shorter treatment times
More restorations



Fewer surgical procedures
Prevention of risks



Quick and immediate restoration
What the patient wants



Economical solution
For the patients



Clinically proven and scientifically based
For safe application



Everything from a single source
Easy thanks to complete protocols

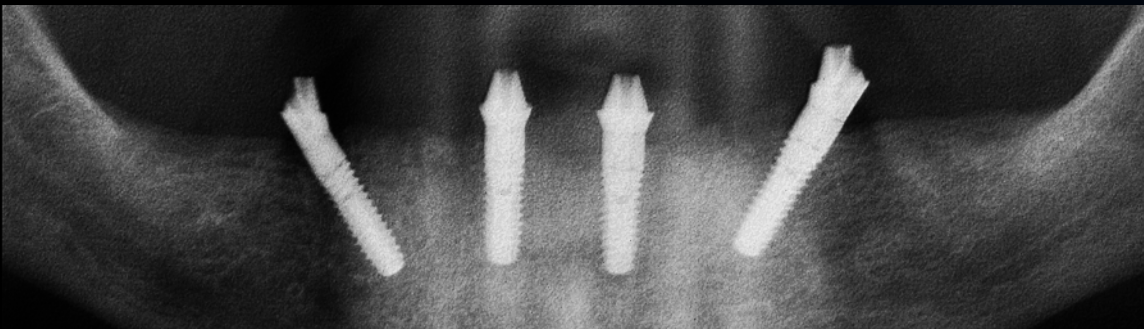
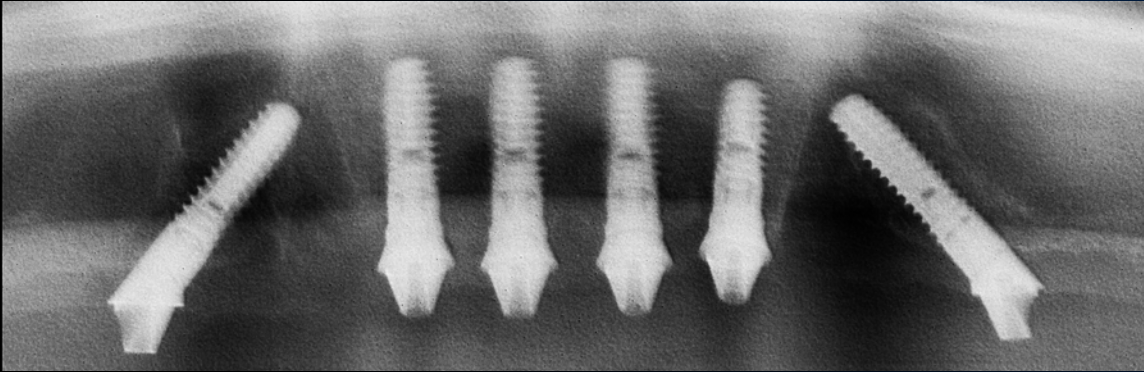


Satisfied patients
More self-confidence and better quality of life



SKY 
fast & fixed

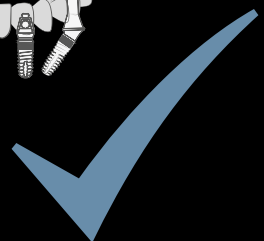
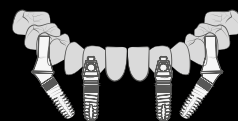
bredent
medical



The advantages

- *Standardised workflow makes the work easier*
- *Reduction and prevention of errors and complications*
- *Short treatment times*
- *Saving of time and costs*
- *Increase in turnover*
- *Satisfied patients – the best advertisement for the practice and laboratory*

SKY 
fast & fixed



READY FOR USE

Supporting Digital Dentistry

Process:

Upload your DVT data and intraoral scan securely to the READY FOR USE cloud platform. No IO scanner? Simply send your models to CONFIDENTE, and they will handle the digitization for a small fee.

CONFIDENTE handles the 3D planning, which you can then review and adjust as needed.

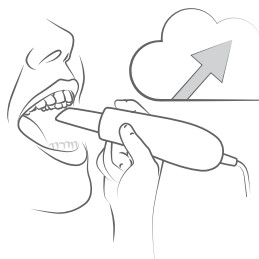
After your approval, the surgical guide is produced and shipped along with the planned implant.

For your first surgery, an experienced medical product consultant from bredent medical will be by your side – ensuring a safe and precise procedure.

This makes the process simple, fast, and secure.

READY FOR USE

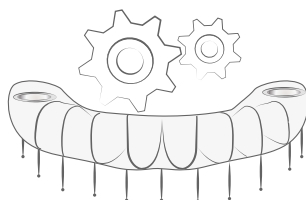
Supporting Digital Dentistry



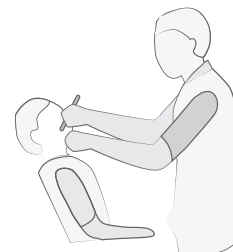
1 **Reception
of digital data**



2 **3D planning
& design**



3 **Production
after approval**



4 **Support for
first surgery**

Guided Implantology

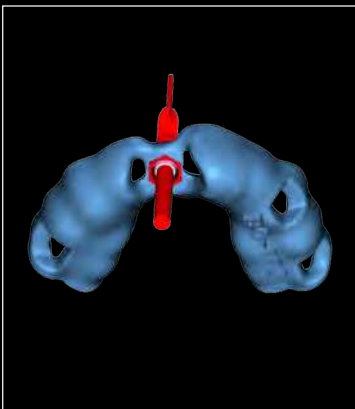
Simple and Secure

For long-term implant success, the implant position and axis are of utmost importance. With the highly praised SKY pro guide OP-Tray and the award-winning planning service from CONFIDENTE, you can seamlessly integrate guided implantology into your practice – without the need for software investment.

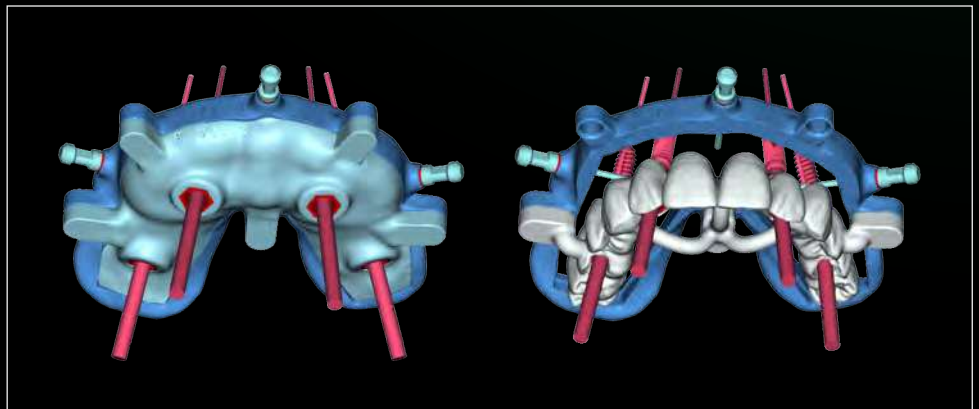
Radiant Smiles

with Precision:

3D-Guided Implantology by CONFIDENTE.
From precise single-tooth restorations in the anterior region to the innovative SKY fast & fixed immediate restoration, and even highly complex full-arch rehabilitations with multiple implants – experience the next level guided implantology..



*Single-tooth restoration
– anterior region*



SKY fast & fixed – immediate restoration with stackable surgical guide

Backward Planning

without changing software!

The right option for every application:



PRO

- Create your implant project with prosthetic components for a prosthetically guided planning approach
- AI-assisted segmentation of bone and teeth for precise treatment planning



DESIGN

- Design all types of surgical guides from the start, based on your implant planning
- Export surgical guides or models in STL format for CAM manufacturing



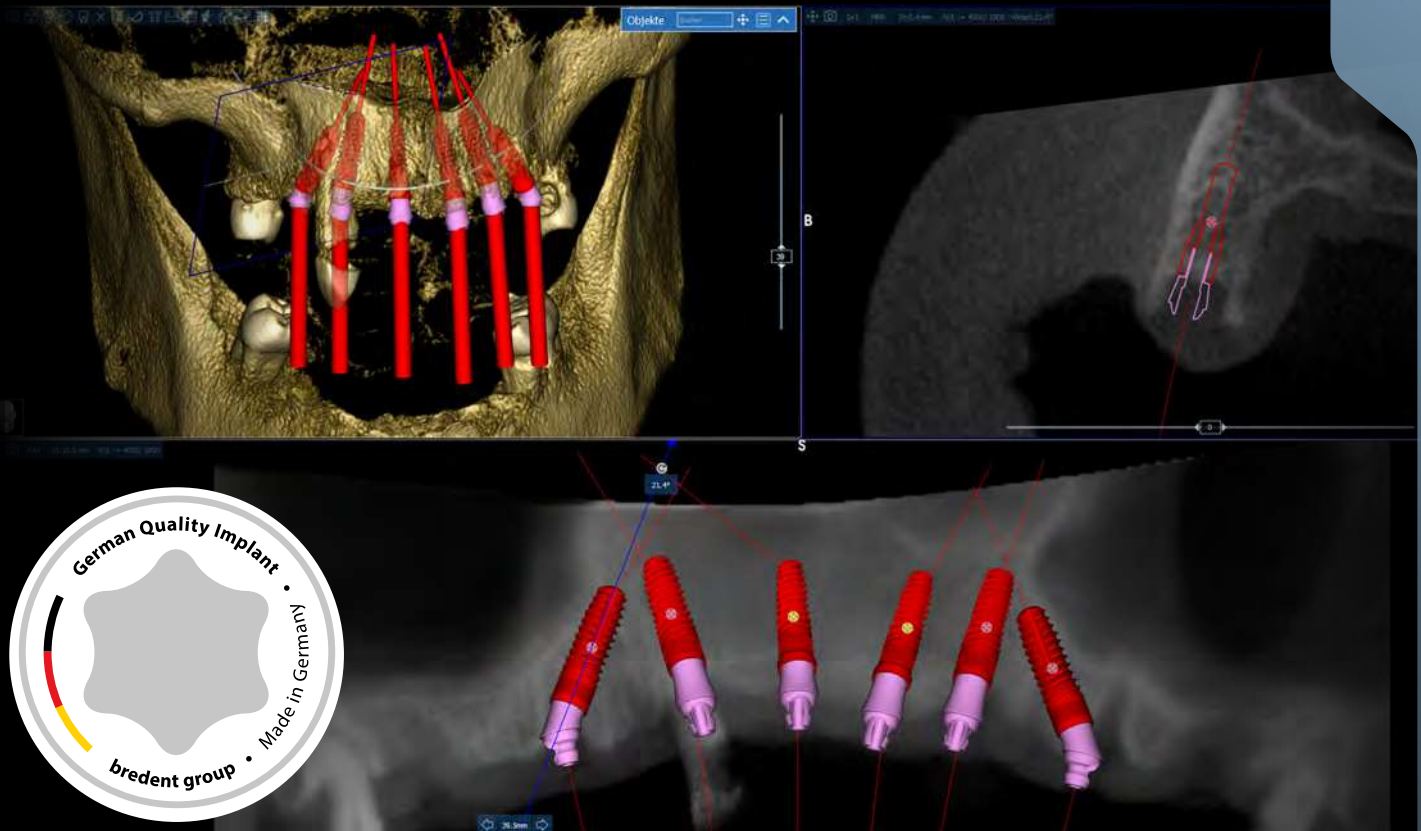
CAD

- Create temporary restorations based on implant planning and scans
- Design crowns and bridges on implants using tooth libraries or wax-ups



CAD+

- Benefit from planning and CAD design software in a single license/workflow
- Create restorations directly from implant planning for seamless integration

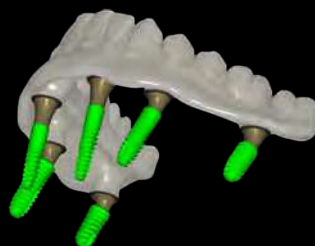


The Software Suite *of bredent group*

Implant Planning – Guide Creation – CAD Design

Fully Integrated CAD Software

- Crowns & bridges
- Immediate restorations
- Full-arch restorations



Essential Bacteria and Biofilm Management



Efficient

Anti-microbial photodynamic therapy (aPDT) destroys pathogenic bacteria in oral dysbiosis, helping the body restore physiological equilibrium.

Low-level laser therapy (LLLT) reduces pain and also stimulates the body's own regeneration processes to heal wounds and inhibit inflammation.



Gentle

The therapy is **pain-free and has no side effects** as the low-energy HELBO TheraLite laser does not heat the tissue.



Safe

Based on CE-certified products and decades of market-leading experience in dental medicine, HELBO therapy delivers safe, effective treatment through an optimally coordinated therapy concept. This is corroborated by numerous studies and case studies.



HELBO[®]

PHOTODYNAMIC THERAPY

Benefits for Implantology

- *Reduces pain, inflammation, and infections*
- *Heals mucositis, preventing peri-implantitis*
- *Promotes reliable bone and soft tissue regeneration, improving osseointegration*
- *Prevents complications, even in high-risk patients and immediate implantations*
- *Eliminates the need for routine systemic antibiotics – avoiding antibiotic resistance*

*The Key to Long-Term Tooth and
Implant Preservation – and Overall Health!*



Training Facilities *of the bredent group*

The bredent group training program is developed through close collaboration between sales, product management, and strategic leadership. The insights and recommendations of experienced speakers play a particularly valuable role in shaping the program.

The focus is on the realistic application of innovative solutions. As a family-owned company, the bredent group values honest collaboration. The goal is to provide genuine added value and contribute to improving patient health.



The Training Lab in Senden *The first training facility of the bredent group.*

The headquarters of the bredent group in Senden is the company's oldest training facility. Since 1999, the specially equipped lab has been utilised with state-of-the-art technology.

The facility includes: BF2 milling machines, Dekema ceramic furnaces, Ten Freuding workstations, Thermopress 400 devices. The first courses focused on the visio.lign system and BioHPP pressing techniques. Today, the facility hosts up to 40 courses annually, welcoming 400 participants.

A distinctive feature of the training program is the multi-day processing of large implant prosthetic restorations, spanning three to four days – from framework construction to final polishing.

Renowned experts such as Tim Wittig, Lars Schäfer, and Sergej Deutsch actively contribute to these high-level courses.



Eisenhammer Training Center

Located in Wesertal

The Eisenhammer in Lippoldsberg, founded in 1555, is a remarkable example of progress and technological innovation. Over the centuries, its production facilities have been continuously modernised, and workers have been continuously trained.

Today, the restored building blends historical atmosphere with state-of-the-art equipment. In 2022, it was transformed into a bredent group training center, offering a unique learning

environment that combines tradition and modernity.

The Eisenhammer serves as a training center for Dental Concept Systems, bredent, and bredent medical. With around 580 participants and over 100 events annually, it provides ideal conditions for hands-on professional development. The Eisenhammer remains a key location where tradition meets innovation, ensuring high-quality education for dental professionals.



IFZI GmbH

International Training Center for Dental Implantology in Nuremberg

The IFZI (International Training Center for Dental Implantology) has been offering comprehensive educational programs since 1995, training over 9,000 participants worldwide. Modules 1 to 4 provide fundamental knowledge of implantology. Module 5 includes hands-on supervision in the participant's own dental practice.

The IFZI Curriculum delivers a practice-oriented education, making it ideal for beginners in implantology. Additionally, the human cadaver course at Charité University enhances

anatomical understanding, ensuring in-depth practical training.

In addition, training programs on the digital workflow („Digital Advance“) and specialised courses for surgical assistance are available. The curriculum is further enhanced by DTMD courses (dtmd.eu), offering advanced specialisation in modern dentistry.

Get the latest news about bredent at IDS 2025



*Scan the **QR-Code** and discover
our **exhibition programme**,
speaker profiles, product highlights
and etc.*

Do you have further questions about
our exhibition appearance or require individual
information of any kind? Please do not hesitate
to contact us.

Contact details:
kundenservice@bredent.com
+49 7309 872-22

bredent^{group}

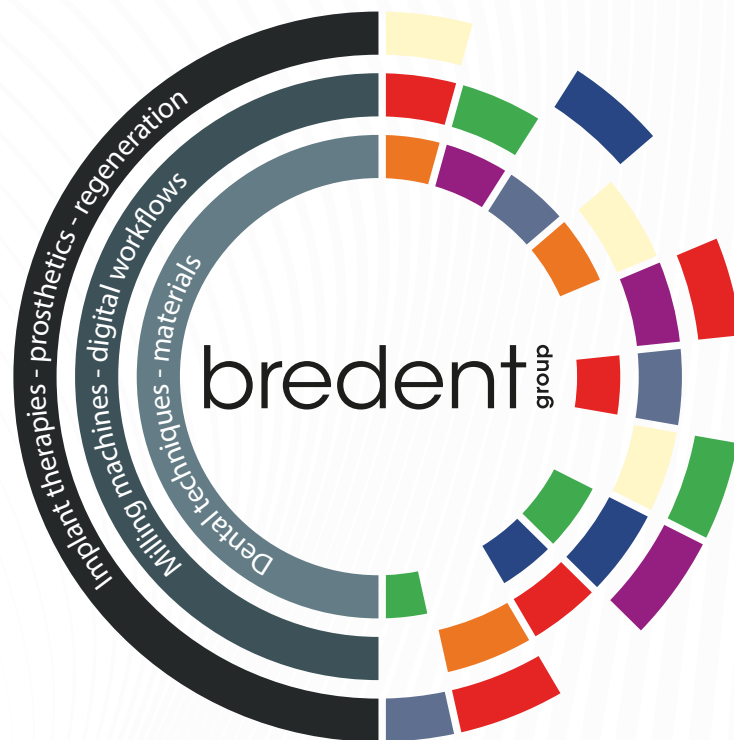


bredent



DENTAL
Concept Systems

bredent
medical



360° DENTAL COMPETENCY



**SCAN TO
CONNECT
WITH US.**

breident

breident GmbH & Co. KG ·
Weissenhorner Str. 2 · 89250 Senden · Germany
+49 7309 872-440 · F: +49 7309 872-444 ·
info@breident.com · www.breident.com



Dental Concept Systems GmbH
Gieselwerder Str. 2 · 34399 Wesertal · Germany
T: +49 5572 3021010 · F: +49 5572 3021099
www.dental-concept-systems.com

**breident
medical**

breident medical GmbH & Co. KG ·
Weissenhorner Str. 2 · 89250 Senden · Germany ·
T: +49 7309 872-440 · F: +49 7309 872-444 ·
info-medical@breident.com · www.breident-medical.com



**SCAN & GET ALL THE INFO
ABOUT IDS 2025!**

50 years of breident

breident
group

